



Wrightstyle Limited

Company Profile

Wrightstyle Limited
Units 2 and 7 Banda Industrial Estate
Nursteed Road
Devizes
Wiltshire
SN10 3DY

Tel: +44 (0)1380 722239

Fax: +44 (0)1380 721734



Company Profile

SECTION 1.0

CONTENTS

Section	Title
1.0	Contents
2.0	Company Details
3.0	Operations
4.0	Health and Safety
5.0	Environment
6.0	Experience



Company Profile

SECTION 2.0

2.1 Company Details

This section provides a brief overview of Wrightstyle's contact details along with the company registration information.

Company Name:	Wrightstyle Limited
Address of Contractor:	Units 2 and 7 Banda Industrial Estate Nursteed Road Devizes Wiltshire SN10 3DY
Telephone Number:	+44 (0)1380 722239
Fax Number:	+44 (0)1380 721734
Email	info@wrightstyle.co.uk
Website	<u>www.wrightstyle.co.uk</u>

2.2 Company Registration Details

Company Registration No:	0318 5096
VAT Registration No:	974 9545 59
UTR No:	17171 13641
CITB Registration No: (if construction is your main activity)	N/A
Year Established:	1996
Approx. Annual Turnover:	2 - 3 million



Company Profile

SECTION 3.0

3.1 Operations Overview

Wrightstyle design, test, supply and install a complete range of high quality, high specification, **specialist steel and glass systems**.

Our systems are designed as a cost effective solution for special applications, and are backed up by an extensive testing and development programme.

For all projects our aim is to assist the contractor and architect through our extensive technical support.

We offer a range of options in the supply of our unique steel glazing systems:

- Fabricated and powder coated curtain walling, doors, screens, windows and roof glazing, with or without fire resistant glass.
- Site installation service.

Wrightstyle Steel Glazing systems – delivering the best products and services:

- Tested, certified, proven – fire rated, blast and ballistic applications – and more
- Comprehensive design and technical support
- State of the art fabrication facility, using the latest CNC technology
- High quality finishing
- In-depth knowledge – our own systems from design to installation
- Global test data
- Best practice systems i.e. our curtainwalling - the easiest to install – saving on-site time

Our Vision:

- To continually design, develop and supply innovative glazing solutions.

Our Core Values:

- Can-do philosophy
- Honesty and integrity
- Professional (everything backed up by test evidence)
- Flexibility



Company Profile

3.2 History

In 1996 the company was formed by establishing links with European steel mills, for the supply of cold rolled profiles. We then embarked upon a rigorous testing programme for Fire, Ballistic and Blast products, to establish a high performance steel façade, door, screen and window system; with the overriding goal to provide FULLY TESTED and accredited steel glazing systems to fabricators. We also undertook testing around the world, and through this programme of constant design, development and testing, have established the company we know today. Wrightstyle is now a company with its well established reputation for offering fully accredited glazing systems in both in the UK and export markets.

Moving into their first premises in 1996, Wrightstyle quickly established itself within the market place for supplying specialist steel and glass system products.

In 2004, it became apparent that the original 6,000sq foot office and warehouse was too small and Unit 2 was acquired, providing valuable office space, leaving Unit 7 purely as a warehouse. This additional space, of approximately 4,000sq feet, offered for the first time an area for training as well as the vital office space required to allow continued growth.

In 2007, due to high demand from clients, we had to take the decision to provide an additional service, and we therefore started our manufacturing department within the company. This involved obtaining additional factory space of approximately 3,500sq feet and obtaining new production machinery. By investing heavily in the latest Elumatec CNC machines, this gave a direct link from the Design Office to the factory, which in turn allowed fast turn-a-round of materials with the high quality demanded from our clients. With a state of the art bar coding facility, to the multi head CNC operation, along with welding jigs for the door sets, this allowed us to provide the necessary accuracy for the fabrication process.

Current facilities

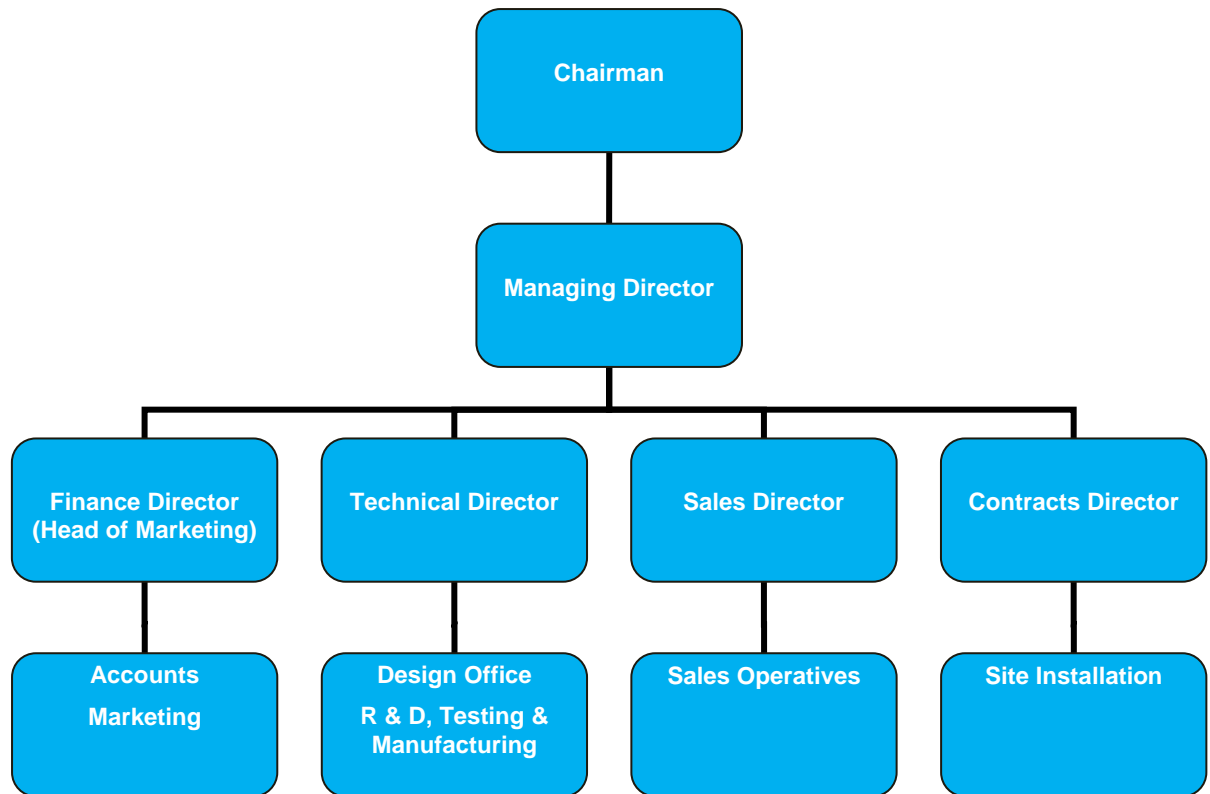
Warehouse	6,000sq feet
Factory	3,500sq feet
Office and Showroom	4,000sq feet

During 2009 it became increasingly important to move the company forward and have more control over getting our products to market. It was decided that an installation service would provide this much sort after element. During 2009 and 2010 we worked on getting procedures in place to allow us to be fully prepared to enter the installation market. In 2010 we undertook our first site installation project and have consistently provided a site presence since the second quarter of 2010. We have since undertaken training for our operatives and have gained CSCS cards for all staff intending to visit site, whether it be to manage, install or inspect.

With our long term plans and sustainable continued growth, Wrightstyle has become a respected and established name within the specialist steel and glass system market.

Company Profile

3.2 Organisation Chart





Company Profile

3.3 Operations Criteria

Main Trade Areas	High Performance Steel Glazed Systems
Sub Trade Areas	Fire, Ballistic & Blast rated glazed doors, screens, windows & curtain walling
Minimum Order Value	£1,000.00
Maximum Order Value	£500,000
Design resource	In House + External where necessary

3.4 Geography

We operate on a national and international basis.

3.5 Service Level

Labour, Plant and materials can all be provided by Wrightstyle Limited

3.6 Resource Levels

Labour, Plant and materials can all be provided by Wrightstyle Limited

	Managers	Supervisors	Skilled	Semi-Skilled
Directly employed	4	2	8	
Subcontractor Indirectly Employed		4+	10+	2+



Company Profile

SECTION 4.0

4.1 Health and Safety

It goes without saying Health and Safety has a major part to play within the construction industry. At Wrightstyle we take H&S matters seriously. We employ an external H&S company to ensure we have a completely independent review on our H&S items. Wrightstyle employ the services of an outsourced H&S adviser. Our service provider is The Health and Safety People (THSP).

We are proud that we hold an accident and incident free past 3 years within the company.

Please see attached our H&S policy introduction for your information.

Every project installed on site has a full site information folder containing, but not limited to the following items.

- Health & safety statement
- List of project contacts
- Copies of Method Statements / Risk assessments / COSHH assessments
- Current insurance details
- Drawings
- Handover sheets

Alongside the elements above operatives are required to complete and place within the site file the following additional information.

- Daily Attendance Record / Daily Site Diary
- Individual Operatives Record
- Accident Forms
- PPE Issue Register
- Plant Monitoring Sheet
- Standard Toolbox Talks
- Copy of applicable CSCS cards

Once the project has been completed, the file is returned to the office for review to enable the O&M manuals to be undertaken, with the issue of the AS BUILT drawings.

Company Profile

SECTION 5.0

5.1 Environmental

The Environment issues are at the forefront of all company's requirements. At Wrightstyle we are not different. We believe that by reducing our carbon footprint we can make contributions to the environment.

Wherever possible all Wrightstyle deliveries are packaged to go on group carriage. With good planning this is not only achievable but also cost effective.

Materials are also shipped on sustainable timber pallets.

Our factory has the latest CNC production facility ensuring elements are manufactured efficiently. This again ensures we are not only environmentally effective but also cost effective.

It is generally accepted that steel is better for the environment than aluminium on all four environmental indicators (carbon, energy, air, water). Steel is essentially infinitely recyclable.

Wrightstyle recognises its responsibilities to minimise the impact its operations may have on the environment and seeks to achieve this through a programme of continual operational improvement. We endeavour to carry out all work procedures in accordance with all relevant environmental legislation and ensure that all employees are aware of their responsibilities to reduce their possible impact on the environment. We are committed, wherever possible, to conserve valuable resources, minimise wastage, and prevent pollution.

We will:

- Continuously improve the effectiveness of our environmental policy.
- Minimise, re-use and recycle products and resources whenever possible.
- Communicate and correspond electronically to reduce paper usage.
- Promote energy efficiency.
- Share transport, where practical, for commuting and business travel.
- Use of groupage freight for the import and export of materials, to minimise CO2 emissions.
- Prevent pollution wherever possible.
- Quantify and monitor all significant environmental impacts of the business and set specific targets to seek continual improvement.
- Comply with all relevant current legislation and industry standards and, where possible, seek to meet the requirements of future legislation in advance of implementation.
- Ensure that all employees are aware of their responsibilities in implementing this environmental policy.

Wrightstyle's main environmental impacts are waste, raw material and energy.

Therefore we will pay particular attention to:

- Reducing the amount of raw material used and purchasing materials produced by sustainable means wherever possible
- Efficiency savings in waste production through waste monitoring and recycling (e.g. packaging, pallets, toner cartridges, material offcuts & samples)
- Reduce energy and water use via monitoring of bills and installation of energy saving electrical equipment whenever possible (e.g. heating and lighting)

We will ensure this environmental policy is implemented and maintained at all levels.

Company Profile

SECTION 6.0

6.1 Experience

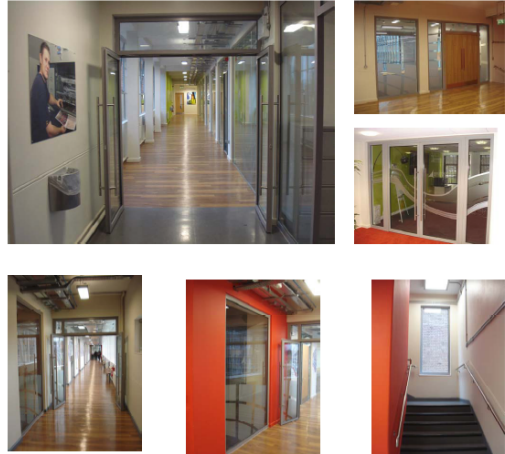
Project: Cancer Research Building, Oxford



Scope of Works
30 minute integrity only Fire rated
atrium screens
4 floors
2 Number Atriums
System
5050 Series

Architect
MAKE Architects
Main Contractor
MACE PLUS

Project: James Watt Campus, Birmingham

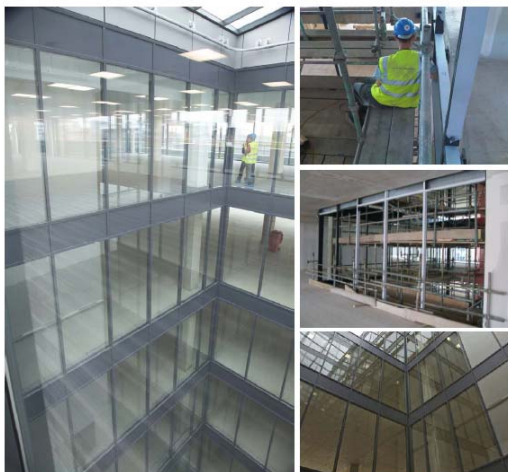


Scope of Works
Provide EI60 and EI30 Fire Rated
Windows and Doors

System
6050-F1 Series Doors

Architect
McAndrew Watts
Main Contractor
TOL Contracts
JarvisElite

Project: Bridgewater House, Bristol



Scope of Works
Fire Rated Atrium Screen

System
SR60 series Curtain Walling

Architect
Arturus Architects

Main Contractor
Sisk
Astec Projects

Project: St Stephens Shopping Centre, Hull



Scope of Works
Fire resistant Curtain Wall
Doors,
Double glazed fire resistant glass
units.

System
SR60 series
WSL G30
5050 series

Architect
Holder Mathias
Main Contractor
HBG Construction